

**DEEPEA**  
Power & Light<sup>®</sup>



# SeaStrobe<sup>™</sup> LED SeaLite<sup>®</sup>



## FEATURES

**Wide, Flood, or Spot Configurations**

**Up to 10,000 Lumens**

**4,000 m, 6,000 m, and 11,000 m Depth Rated Options**

**Flicker-Free Digital and Analog Dimming Interfaces**

**Customer Serviceable**

**SeaSense<sup>™</sup> Protocol**

**Strobe Capabilities**

**Two-Year Warranty**

T: 858-576-1261  
F: 858-576-0219

4033 Ruffin Road  
San Diego, CA  
92123-1817 USA

[www.deepsea.com](http://www.deepsea.com)  
[sales@deepsea.com](mailto:sales@deepsea.com)



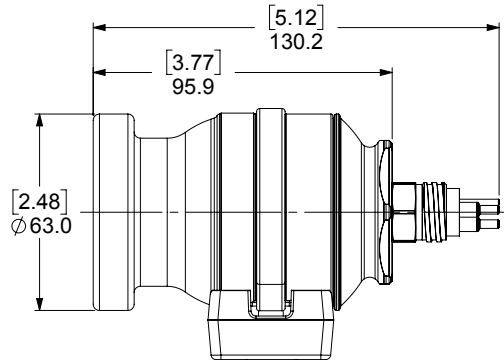
# SeaStrobe™ LED SeaLite®

	LSL-2075
<b>Optical Specifications</b>	
Typical Lumen Output (Flood)	10,000
Efficacy	100 lm/w
Lux at 1 m	TBD
Color	Day Light White 5000 K ~ 6500 K Warm White 2600 K ~ 3700 K Contact Sales for Color Options
CRI	Day Light White: 70 Warm White: 80
Beam Angle (HPFW)	Wide²: 115° Flood: 75° Spot: 35°
Minimum Pulse Width	1.3 ms
Maximum Pulse Width	∞
Minimum Pulse Period	250 ms
Maximum Pulse Period	∞
<b>Environmental Specifications</b>	
Depth Rating	4,000 m Acrylic Port 6,000 m or 11,000 m Sapphire Port
Thermal Protection	Intelligent Thermal Rollback
Operational Temperature	-10°C ~ 40°C [14°F ~ 104°F]¹
Storage Temperature	-40°C ~ 100°C [-40°F ~ 212°F]
<b>Electrical Specifications</b>	
Voltage	10~48 VDC
Over Voltage Limit	56 VDC
Under Voltage Limit	8 VDC
Power	106W @ 24 VDC
Charge Power	TBD
Pulse Power	TBD
Inactive Power	TBD
Pulse Mode	Input Follow, Pulse Trigger
Pulse Sync	Falling edge Rising Edge
Dimming	RS-232, RS-485
<b>Mechanical Specifications</b>	
Housing	Hard Anodized 6013 Aluminum Titanium
Port	Standard: Sapphire Optional: Acrylic
Outer Diameter	63 mm [2.48 in]
Overall Length	Acrylic Flood/Wide: 95.9 mm [3.77 in] Sapphire Flood: 93.3 mm [3.67 in] Acrylic/Sapphire Spot: 99.6 mm [3.92 in]
Weight in Air	TBD
Weight in Water	TBD
<b>Connector</b>	
Default	SEACON MCBHMP SS Please contact sales for more options.

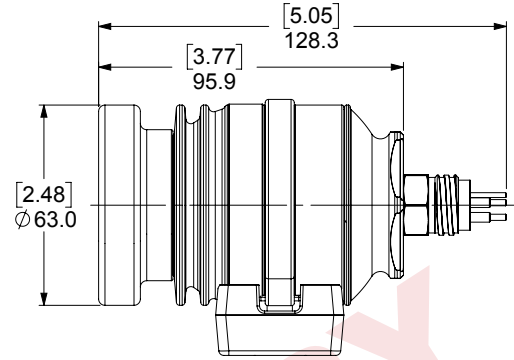
# SeaStrobe™ LED SeaLite®

## Dimensions

Flood Beam Acrylic Port

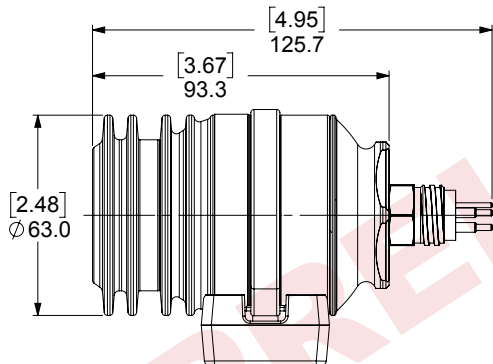


FLOOD/WIDE ACRYLIC ALUMINUM  
mm [inch]



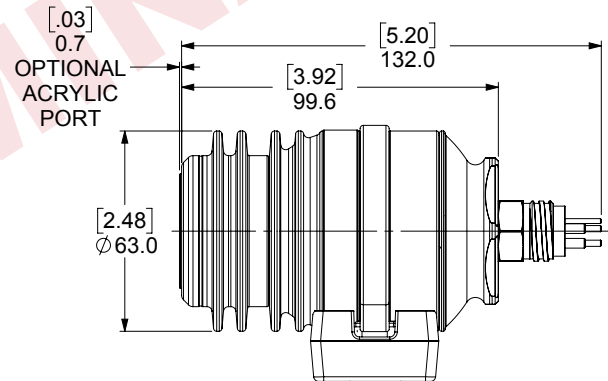
FLOOD/WIDE ACRYLIC TITANIUM  
mm [inch]

Flood Beam Sapphire Port



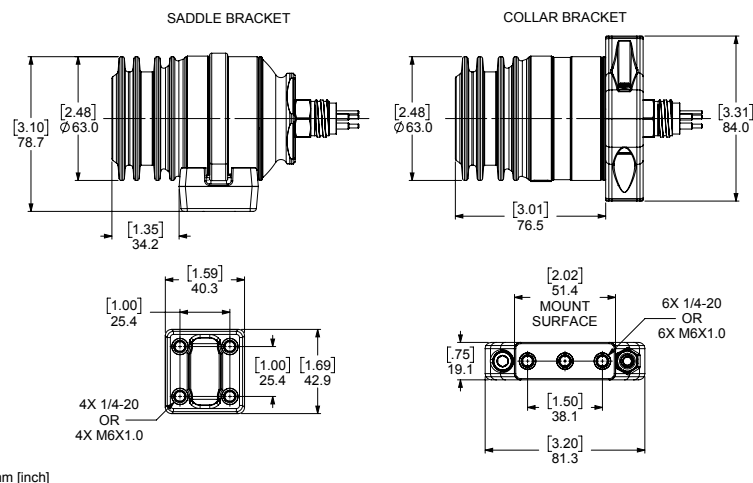
FLOOD SAPPHIRE  
mm [inch]

Spot Beam



SPOT ACRYLIC/SAPPHIRE  
mm [inch]

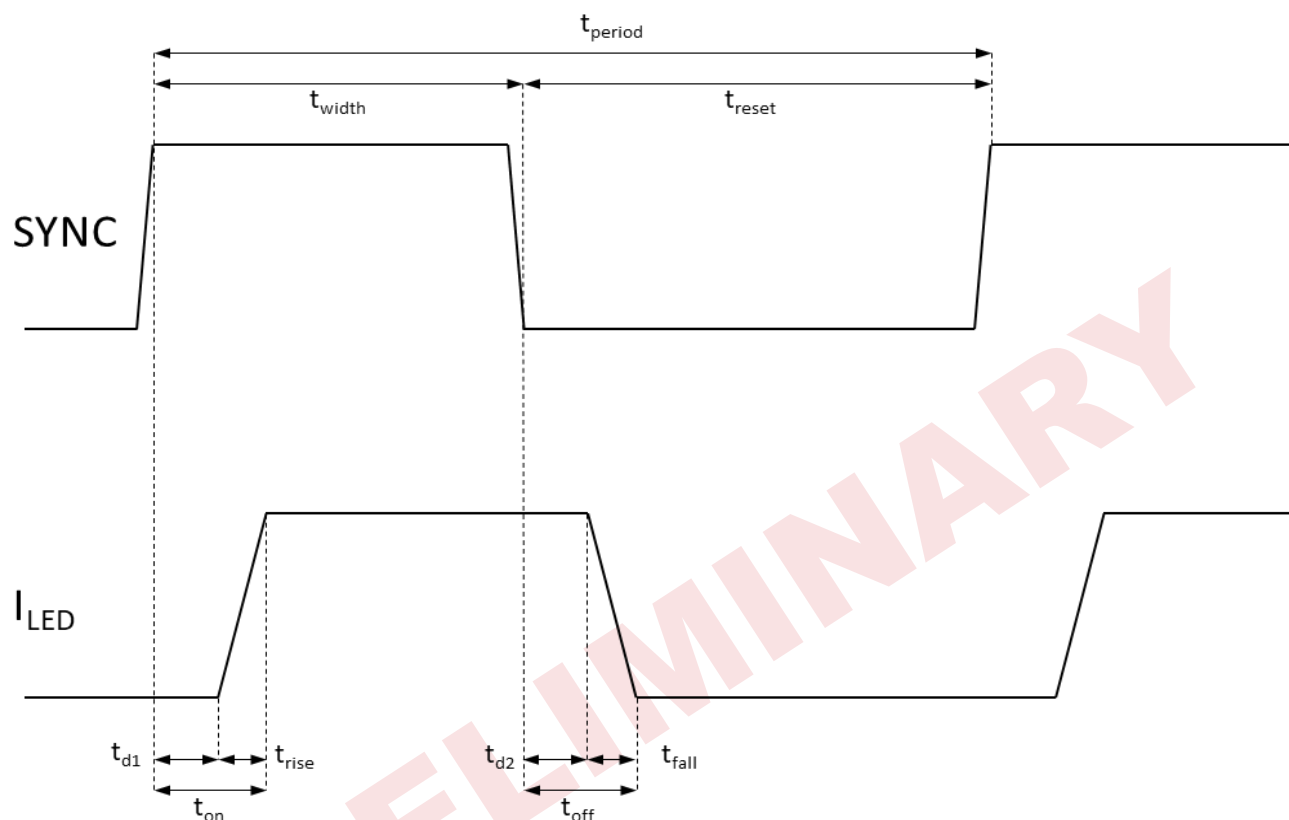
Bracket



mm [inch]

# SeaStrobe™ LED SeaLite®

## Pulse Timing Parameters



Minimum period	$t_{\text{period}}$	250 ms
Minimum pulse width	$t_{\text{width}}$	2 ms
Minimum reset time	$t_{\text{reset}}$	175 ms
Turn on delay	$t_{\text{d1}}$	250 $\mu\text{s}$
I <sub>LED</sub> rise time	$t_{\text{rise}}$	1 ms
Time to ON	$t_{\text{on}}$	1.25 ms
Turn off delay	$t_{\text{d2}}$	200 $\mu\text{s}$
I <sub>LED</sub> fall time	$t_{\text{fall}}$	200 $\mu\text{s}$
Time to OFF	$t_{\text{off}}$	400 $\mu\text{s}$